

# ***Standard Solutions***

---

G3 Ethernet IP (240-325)  
Commissioning (EDS file V1.08)

3/14/2016



# ***G3 Ethernet IP/DLR Configuration (240-325)***

---

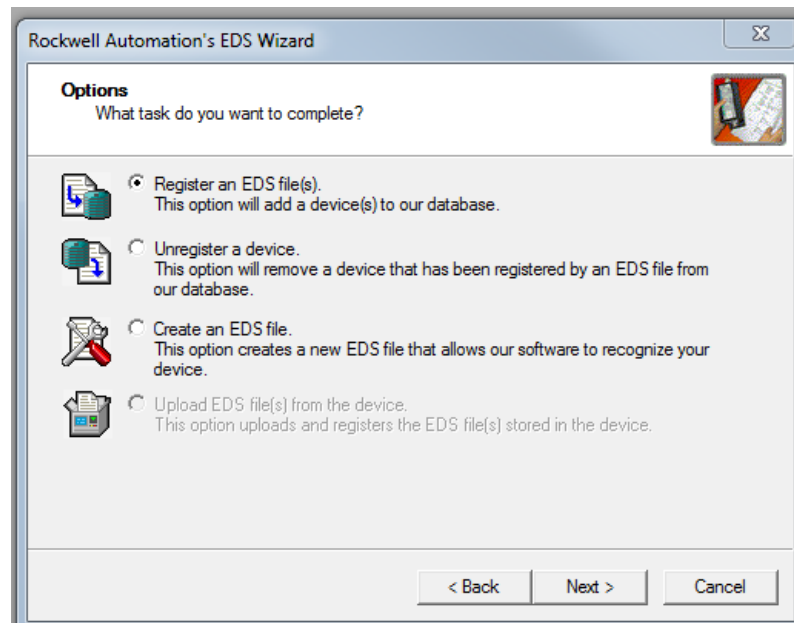
Applies to G3 Ethernet IP (240-325)

1. Instructions to configure a Rockwell PLC to communicate with a G3 Ethernet IP module using RS Logix 5000)
2. The Numatics G3 EDS file version 1.04 and 1.08 must be installed, EDS files are available for download at Asco.com
3. G3 Technical manuals and configuration files can be found at;  
<http://www.asco.com/en-us/Pages/fieldbus-technical-document-search.aspx>

# G3 Ethernet IP/DLR Configuration (240-325)

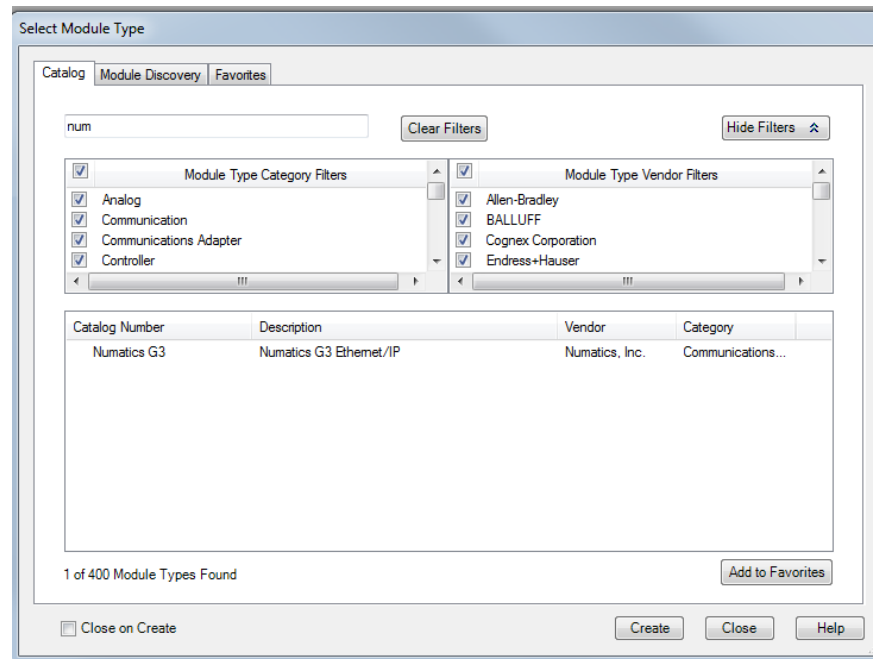
## Install the Numatics “G3 Ethernet IP v1.08” Ethernet IP EDS file

If the Numatics EDS file has not been installed; open RS Logix 5000 and run the Hardware installation tool to register the Numatics G3 EDS file. Once the file is registered; proceed to the next step.



# G3 Ethernet IP/DLR Configuration (240-325)

Select add new module and choose Numatics G3 Ethernet IP



# G3 Ethernet IP Configuration (240-325)

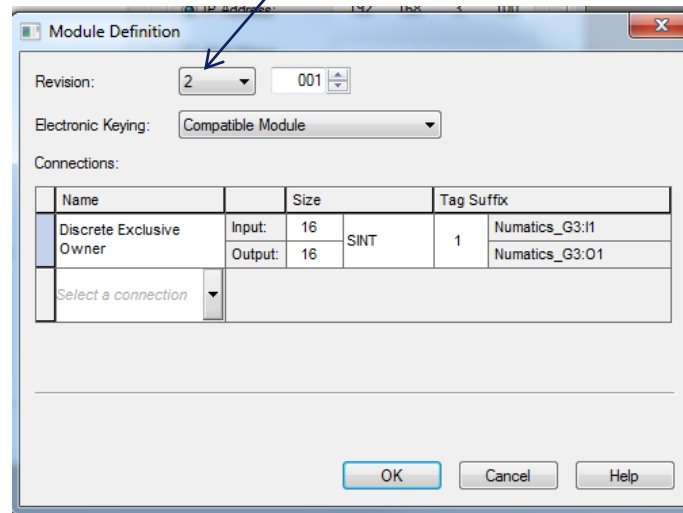
Enter a Name, description and IP address for the G3 manifold. Then select “Change”

The screenshot shows a Windows-style dialog box titled "Module Properties: Local (Numatics G3 2.001)". It has several tabs: "General", "Connection", "Module Info", "Internet Protocol", "Port Configuration", and "Network". The "Network" tab is selected. The dialog is divided into two main sections. The left section contains fields for "Type:" (Numatics G3 Numatics G3 Ethernet/IP), "Vendor:" (Numatics, Inc.), "Parent:" (Local), "Name:" (Numatics\_G3), and "Description:" (Numatics G3 IP Manifold). Below these is a "Module Definition" section with "Revision:" (2.001), "Electronic Keying:" (Compatible Module), and "Connections:" (Discrete Exclusive Owner). The right section is titled "Ethernet Address" and contains three radio buttons: "Private Network:" (192.168.1.), "IP Address:" (192 . 168 . 3 . 100), and "Host Name:". The "IP Address:" option is selected. At the bottom of the dialog, there is a "Change ..." button, which is circled in red. The status bar at the bottom left shows "Status: Offline", and the bottom right has "OK", "Cancel", "Apply", and "Help" buttons.

# G3 Ethernet IP Configuration (240-325)

## Module Definition Select Module Type

Select Revision "2" for G3 240-325 Ethernet IP/DLR module



Module Definition

Revision: 2 001

Electronic Keying: Compatible Module

Connections:

Name	Size	Tag Suffix
Discrete Exclusive Owner	Input: 16 Output: 16	SINT 1 Numatics_G3:I1 Numatics_G3:O1
Select a connection		

OK Cancel Help

# G3 Ethernet IP Configuration (240-325)

## Module Definition

Configure Input and Output data table type and size

Module Definition

Revision: 2 001

Electronic Keying: Compatible Module

Connections:

Name	Input/Output	Size	Data Type	Tag Suffix
Discrete Exclusive Owner	Input:	16	SINT	Numatics_G3:I1
	Output:	16		Numatics_G3:O1
Select a connection				

OK Cancel Help

Set data type as SINT,INT or DINT

Set Input and Output sizes based on the specific manifold I/O sizes\*

\*Refer to the G3 Ethernet IP Technical Manual TDG3EDM1-3EN at [asco.com](http://asco.com) for more information on I/O mapping and data size

# G3 Ethernet IP/DLR Configuration (240-325)

## Module Definition

Configure Input and Output data table type and size

Module Definition\*

Revision: 1 001

Electronic Keying: Compatible Module

Connections:

Name	Input	Output	Size
Discrete Exclusive Owner	16	16	SINT

OK Cancel Help

Set data type as SINT,INT or DINT

Set Input and Output sizes based on the specific manifold I/O sizes\*

\*Refer to the G3 Ethernet IP Technical Manual TDG3EPTM1-6EN at [asco.com](http://asco.com) for more information on I/O mapping and data size



# G3 Ethernet IP Configuration (240-325)

## Module Definition

Configure Diagnostic data table type and size

Select "Status Only" To map the G3 diagnostic data into the PLC status table

Revision: 2 001

Electronic Keying: Compatible Module

Connections:

Name	Input	Output	Size	Tag Suffix
Discrete Exclusive Owner	16	16	SINT	1
Status Only	16	0	SINT	2
				<none>

OK Cancel Help

Set data type as SINT,INT or DINT

Set Status data sizes based on the specific manifold diagnostic data size\*

Select OK to save configuration

\*Refer to the G3 Ethernet IP Technical Manual TDG3EPTM1-6EN at [asco.com](http://asco.com) for more information on I/O mapping and data size

# G3 Ethernet IP Configuration (240-325)

Module Properties Connection Tab  
Configure Diagnostic data table type and size

Name	Requested Packet Interval (RPI) (ms)	Connection over EtherNet/IP	Input Trigger
Discrete Exclusive Owner	20.0	Unicast	Cyclic
Status Only	20.0	Unicast	Cyclic

☐ Inhibit Module

☐ Major Fault On Controller IF Connection Fails While in Run Mode

Module Fault

Status: Offline

OK Cancel Apply Help

RPI value selects the rate at which the G3 Ethernet IP/DLR module data is updated (default =20ms)

Unicast vs Multicast communication (Unicast is the preferred mode)

Select OK to complete the G3 Ethernet Module configuration settings